



9a Model Farms Road Winston Hills, NSW

3 1 1

QUALITY SINGLE LEVEL WITH SERENE OUTLOOK

A sanctuary of privacy, space and style; this beautiful family haven offers an expansive 696 square metres of premium family living. Boasting three bedrooms and a choice of living quarters, this design captures comfortable space for the growing family whilst making entertaining family/friends a breeze with the versatility of the undercover alfresco. You will enjoy the blissfully private backyard to relax, read a book or listen to the children's laughter whilst playing. Situated amongst a family friendly neighbourhood within close proximity to all major amenities Winston Hills has on offer.

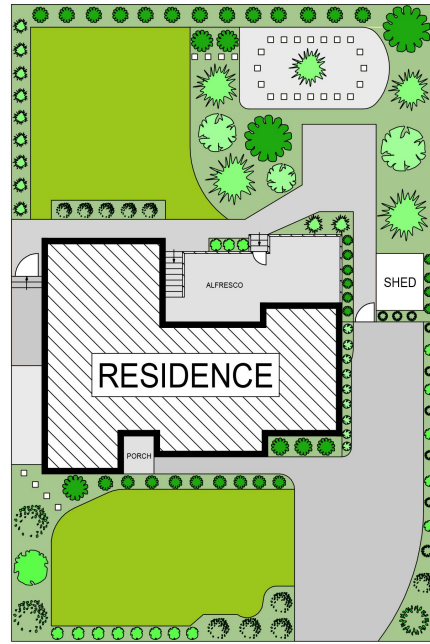
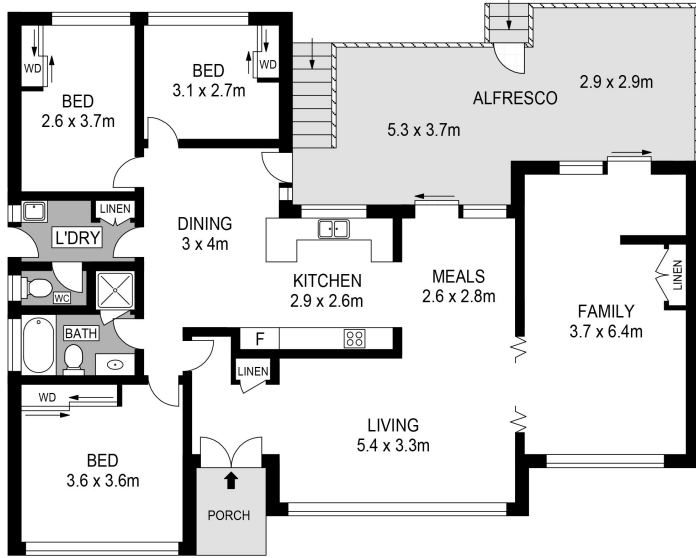
- Expansive 696 Square metres parcel of land with approx. 22m frontage
- Formal and casual living areas equipped for the growing family
- Tasteful design offers a light filled and versatile floorplan
- Light and space is offered throughout the versatile floorplan
- Three good sized bedrooms feature built in wardrobes
- The chef's kitchen displays the heart of the home offering plenty of cupboard/bench space

\$1,351,000

Type : House
Sold Date : Tuesday, 23rd August 2022
Land : 696 m2

Mary Khalil
0432 598 314

Chris Khalil
0450 589 676



SITE PLAN (NOT TO SCALE)



9A Model Farms Road, Winston Hills

9a Model Farms Road, Winston Hills NSW