



23 Model Farms Road Winston Hills, NSW

 4  2  2

TO FIND OUT WHY YOUR PROPERTY IS WORTH MORE WITH WESTONS, CONTACT US TODAY! 9620

Westons Property & Co. is excited to present this perfect parcel of land, with approximately 900sqm even and level block with an extensive 22 metre frontage and 39 metre depth. This rare opportunity is offered with a four bedroom home equipped with an attached studio. Whether you are looking to renovate, move in, knock down, invest or rebuild you will definitely be impressed with the endless possibilities available to you. Situated in an idealic locale moments to transport links, quality schools, reserves, Winston Hills shopping complex and cafes.

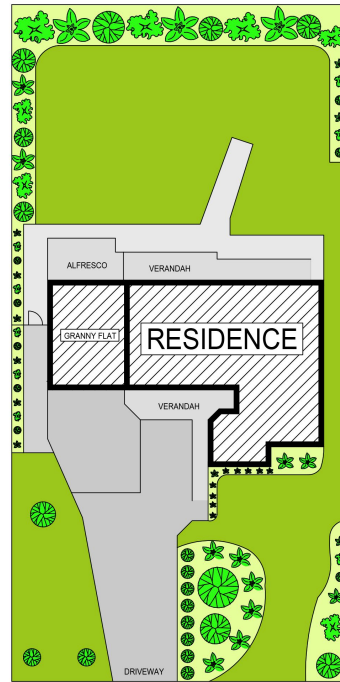
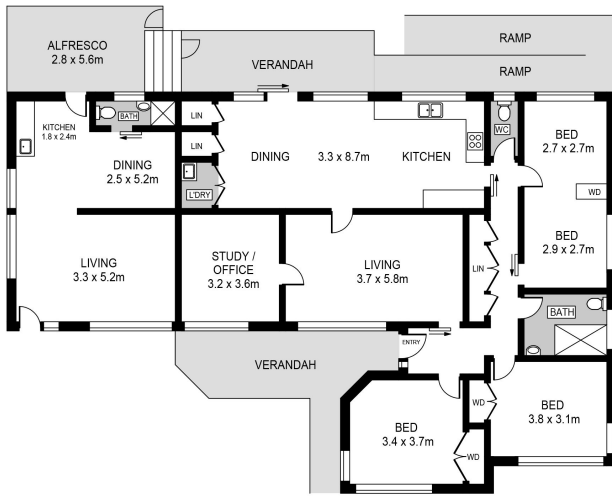
- Large 900sqm with ample opportunity.
- Four bedrooms and additional study room.
- Large open plan kitchen and dining area overlooking backyard.
- Attached side studio equipped with its own kitchen/bathroom and private alfresco.
- Wide frontage with manicured gardens.
- Additional wash closet.

SOLD | \$1,487,000

Type : House
Sold Date : Saturday, 15th May 2021
Land : 900 m2

Mary Khalil
0432 598 314

Chris Khalil
0450 589 676



SITE PLAN (NOT TO SCALE)



23 Model Farms Road, Winston Hills

23 Model Farms Road, Winston Hills NSW