



7 Attlee Place Winston Hills, NSW

 4  2  5

TO FIND OUT WHY YOUR PROPERTY IS WORTH MORE WITH WESTONS, CONTACT US TODAY! 9620

Westons Property & Co. is proud to present this impressive four-bedroom family home situated in a highly sought after cul de sac offering easy access to your neighbouring park to enjoy daily as your own. Boasting light filled, spacious floor plan with a well-designed kitchen at the heart of the home. Nestled on an expansive 771SQM block, this beautiful home will have you create many happy memories with family and friends.

- Superb 771SQM, single level in peaceful setting
- Elegant formal living and dining room
- Light filled four bedrooms, with ensuite to master
- Kitchen equipped with abundance of bench and cupboard space
- Kitchen leading to veranda with elevated views, overlooking the in-ground pool
- Beautifully landscaped garden and impressive, five undercover car spaces and ample off-street parking
- Home offers two reverse cycle air conditioners for comfort all year round

For an excellent opportunity, the

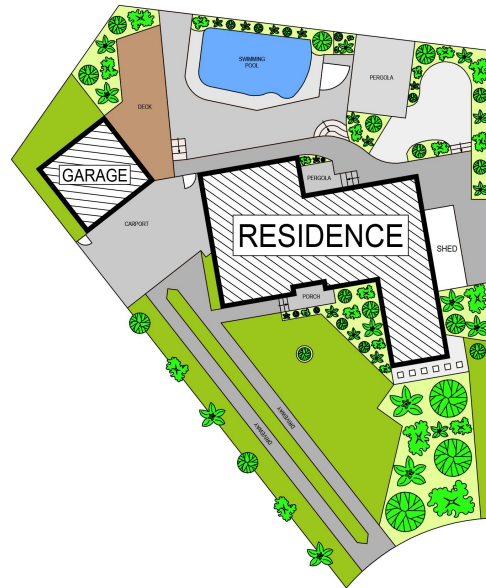
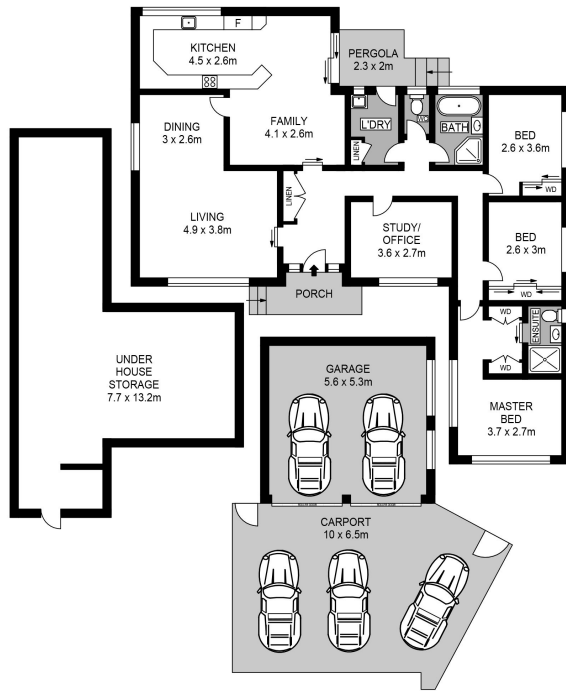
www.westonspropertyco.com.au

**SOLD AT FIRST OPEN
HOME | \$1,040,000**

Type : House
Sold Date : Wednesday, 17th June 2020
Land : 771 m2

Mary Khalil
0432 598 314

Chris Khalil
0450 589 676



SITE PLAN (NOT TO SCALE)



7 Attlee Place, Winston Hills NSW