



WESTONS PROPERTY & CO.



WESTONS PROPERTY & CO.



WESTONS PROPERTY & CO.



WESTONS PROPERTY & CO.

3 Attlee Place Winston Hills, NSW

 4  2  2

**TO FIND OUT WHY YOUR PROPERTY IS WORTH MORE WITH WESTONS, CONTACT US TODAY! 9620**

This beautifully presented family home is set in a desirable location on an expansive 708sqm block. Having a flat block, in a quiet cul-de-sac, amongst a family friendly neighbourhood is ideal for the growing family with young children. You will enjoy the versatile floor plan reflecting a sunlit and neutral palette throughout, showcasing four good sized bedrooms with dual living space. The backyard offers an abundance of level lawn space for children/pets to play safely. All in walking distance to the local Chisholm Centre, transport links including Parramatta/Castle Hill routes and convenient access to the M2 Motorway along with quality schools and parklands.

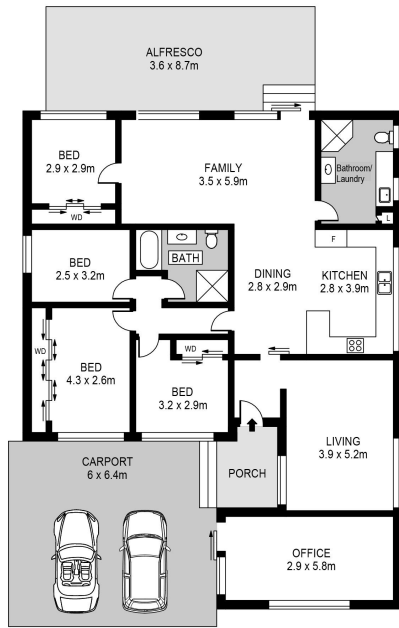
- Perfectly located in a quiet and convenient location on 708sqm
- Four spacious bedrooms, three with built in robes
- Convenience of two separate living rooms
- Light filled kitchen displays plenty of cupboard/bench space
- Additional room to accommodate a home office, games room or storage space
- Internal access to the laundry

**SOLD BY WESTONS IN 4 DAYS |\$1,500,000**

**Type** : House  
**Sold Date** : Wednesday, 13th July 2022  
**Land** : 708 m2

**Mary Khalil**

0432 598 314



SITE PLAN (NOT TO SCALE)



3 Attlee Place, Winston Hills

**3 Attlee Place, Winston Hills NSW**